

PRODUCT TECHNICAL DOSSIER

CHONDROITIN SULPHATE 90% AVIAN (VOLPI)

Product Code:

P03268

Raw Material Full Name:

Chondroitin Sulphate

This material is Food Grade:

✓

Vegan / Vegetarian Status:

Not suitable

Limit/Range/Specification:

90.0% - 105.0% Chondroitin Sulphate Sodium (CPC)

Min 85% Chondroitin Sulphate Sodium (SAX-HPLC)

Electrophorecic Purity:

Max 2%

CAS Number:

9082-07-9

Molecular Formula for the raw material:

$C_{14}H_{22}NNAO_{15}S$

Solubility in Water:

Soluble

Solubility in Alcohol:

Not Soluble

Particle Size:

80 Mesh

Percentage passed through:

100%

Bulk Density:

0.57g/ml – 0.72g/ml



Tapped Density:

0.90g/ml – 1.00g/ml

pH:

5.5 – 7.5

Loss on Drying:

Max 10%

Residue on Ignition:

20% - 30%

Limit of Protein:

Max 6%

Specific Rotation:

-20°C - -30°C

Clarity and Colour of Solution:

Max 0.35

Country of Origin:

Thailand

Country of Origin of the Manufacture:

Thailand

Base Source/Start Material:

Chicken Cartilage

Origin of Product – Synthetic, Plant, Mineral, Animal, Fish or Fermented:

Animal

Species used:

Chicken

What is the extraction/processing used? What solvents are used and at what ratio's?

Alcohol, HCL, NAOH

Material is:

100%

Compound Ingredients Origin, Function and Percentages:

None



Shelf Life from Date of Manufacture:

Min 2 Years

Storage Conditions:

Store in cool & dry place and keep away from strong light and heat.

Appearance (Fine/Crystals/Crystalline/Hygroscopic):

Free Flowing Powder

Colour:

White to Off White

Flavour/Taste:

Characteristic

Odour:

Characteristic

Do any of the parameters change in different seasons?

No

Microbiological Test

Total Viable Count:

Max 1,000cfu/g

Yeast & Moulds:

Max 100cfu/g

Salmonella:

Negative

Heavy Metals

Total Heavy Metals:

Max 20ppm

Lead (Pb):

Max 3ppm

Cadmium (Cd):

Max 1ppm



Mercury (Hg):

Max 0.1ppm

Pharmacopeia Standard Used:

USP

There are no nuts in this recipe; however we cannot guarantee that the raw materials entering the site are nut free.

Please note that surveillance testing may mean that not all the parameters stated on this specification are tested for every batch.

ALLERGENS	Product Free From YES/NO	Listed Item on Site at Manufacturer YES/NO	If YES, Please Comment
Free from Peanuts and Peanut Derivatives (There are no nuts in this recipe, however CCL cannot guarantee that the raw materials entering the site are nut free.)	YES	NO	
Free from other Nut and Nut Derivatives <i>Almond (Amygdalus communis L.), Hazelnut (Corylus avellana), Walnut (Juglans regia), Cashew (Anacardium occidentale), Pecan nut (Carya illinoiesis (Wangenh.) K. Koch), Brazil nut (Bertholletia excelsa), Pistachio nut (Pistacia vera), Macadamia nut and Queensland nut (Macadamia ternifolia)</i> (There are no nuts in this recipe, however CCL cannot guarantee that the raw materials entering the site are nut free.)	YES	NO	
Free from Sesame Seeds and Sesame Seed Derivatives	YES	NO	
Free from other Seeds and Seed Derivatives (Poppy Seeds, Cotton Seeds, Sunflower Seeds)	YES	NO	
Free from Milk and Milk Derivatives (including lactose)	YES	NO	
Free from Egg and Egg Derivatives	YES	NO	
Free from Cereals and Derivatives containing OR POTENTIALLY CONTAMINATED WITH Gluten (<i>wheat, wheatgrass, faro, freekeh, spelt, kamut, rye, oats, barley, barley grass</i>)	YES	NO	
Free from Soya and Soya Derivatives	YES	NO	
Free from Lupin and Lupin Derivatives	YES	NO	
Free from Mustard and Mustard Derivatives	YES	NO	
Free from Celery or Celery Derivatives (including Celeriac)	YES	NO	
Free from Fish and Fish Derivatives	YES	NO	
Free from Molluscs and their Derivatives	YES	NO	
Free from Crustaceans and their Derivatives	YES	NO	
Free from Sulphur Dioxide and Sulphites (E220, E228) at levels > 10mg/kg or 10mg/litre	YES	NO	



ADDITIVES / CONTAMINANTS / DIETARY REQUIREMENTS	Product Free From YES/NO	Listed Item on Site at Manufacturer YES/NO	If YES, Please Comment
Free from Additives	YES	NO	
Free from Antioxidants	YES	NO	
Free from Ethylene Oxide	YES	NO	
Free from Gelatine	YES	NO	
Free from Flavourings (Artificial / Nature Identical / Natural / Smoked)	YES	NO	
Free from Maize / Corn and any Derivatives	YES	NO	
Free from Legumes / Pulses	YES	NO	
Free from Rice and Rice Derivatives	YES	NO	
Free from Added Salt	YES	NO	
Free from Added Sugar / artificial or natural sweeteners	YES	NO	
Free from Aspartame	YES	NO	
Free from BHA / BHT (E320 / E321)	YES	NO	
Free from Caffeine	YES	NO	
Free from Colours (Artificial / Nature Identical / Natural / Smoked)	YES	NO	
Free from Dextrose	YES	NO	
Free from Dioxins	YES	NO	
Free from MSG (Added and Naturally Occurring E621) or Glutamates (E620 to E625)	YES	NO	
Free from Nucleotides (E627, E630, E631, E635)	YES	NO	
Free from Polyols (sugar alcohols)	YES	NO	
Free from Benzoates (E210 / E219)	YES	NO	
Free from Sorbic Acid (E200, E203)	YES	NO	
Free from any other Preservatives	YES	NO	
Free from Ethanol	NO	YES	Ethanol used in the Extraction Process
Free from Honey	YES	NO	
Free from Lactose	YES	NO	
Free from Yeast and Yeast Derivatives	YES	NO	
Free from All Animal Products (Beef, Pork, Poultry or other) and Derivatives (which may include growth/yield hormones, antibiotics etc.)	NO	YES	Chicken Origin
Free from Bovine Products or Derivatives (which may include growth/yield hormones, antibiotics etc.)	NO	YES	Chicken Origin

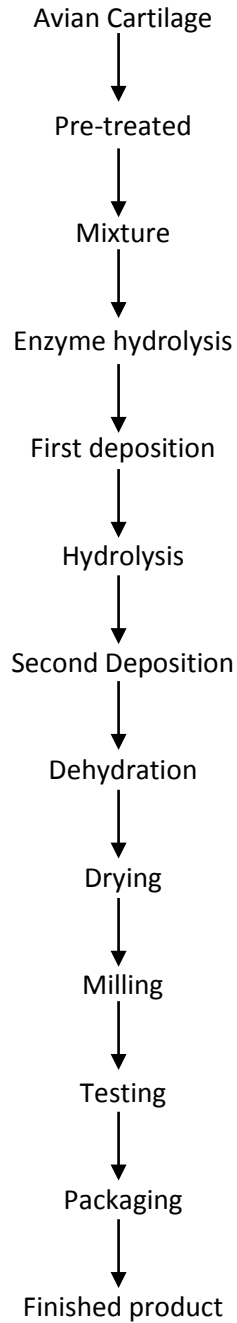


NUTRITIONAL DATA

Test	Calculated Value per 100gm
Energy KJ / Kcal	1,310KJ / 312Kcal
Fat	0g
- Of which saturates	0g
Carbohydrate	73g
- Of which Sugars	0g
- Of which Polyol	0g
- Of which Starch	0g
Fibre	0g
Protein	5g
Salt	0.02g



PRODUCTION FLOW CHART



CONFIRMATION OF BSE/TSE STATUS

This is to certify that this product complies with all relevant current UK and EU Legislative requirements in regard to Transmissible Spongiform Encephalopathies (TSE) and Bovine Spongiform Encephalopathy (BSE) for human food, and so is free of TSE/BSE.

This is also to certify that, during the course of their manufacture, the above-mentioned product did not come into contact with any materials, which could be derived from TSE/BSE risk materials.

CONFIRMATION OF GM STATUS

This is to certify that this product is not manufactured from GM raw materials and is therefore not subject to labelling under regulations 1829/2003/EC and 1830/2003/EC.

CONFIRMATION OF NON IRRADIATION STATUS

This is to certify that this product, whole or in part, has not been subjected to Ionising Radiation as per European Directives 1999/3/EC.

CONFIRMATION OF NANDROLONE STATUS

This is to certify that this product, whole or in part, has not come into contact with Nandrolone or any of its precursors in any way.

CONFIRMATION OF IOC PRODUCT STATUS

This is to certify that this product, whole or in part, has not come into contact with any product/s, which is banned by the IOC (International Olympics Committee) and or WADA.

CONFIRMATION OF ANIMAL TESTING STATUS

This is to certify that all the products sold by Cambridge Commodities have not been tested on animals in any part of its manufacture in accordance with regulation 86/609/EEC.

CONFIRMATION OF PESTICIDES STATUS

This is to certify that the above-mentioned product complies with the regulation (EC) No.396/2005 of 23rd February 2005 and commission Regulation (EU) No. 559/2011 of 7th June 2011 amending annexes II and III of the above Regulation.

CONFIRMATION OF NANOPARTICLE STATUS

This is to certify that unless otherwise stated, the above-mentioned product is free of nanoparticles. Commission Recommendation 2011/696/EU, defines as follows: "'Nanomaterial' means a natural, incidental or manufactured material containing particles, in an unbound state or as an aggregate or as an agglomerate and where, for 50 % or more of the particles in the number size distribution, one or more external dimensions is in the size range 1 nm - 100 nm".



MATERIAL SAFETY DATA SHEET

Section 1 Identification of the Substance/Mixture and of the Company/Undertaking

Product Name: Chondroitin Sulphate 90% Avian (Volpi)
Product Code: P03268
Company: Cambridge Commodities Limited
Lancaster Way, Ely, Cambridgeshire, CB6 3NX
Tel: 01353 667258. Email: qa@c-c-l.com

Section 2 Hazards Identification

Label Precautionary Statements: Irritating to eyes, respiratory system and skin. Wear suitable protective clothing.

Section 3 Composition/Information on Ingredients

<u>Components</u>	<u>% in Product</u>	<u>CAS Number</u>	<u>Formula</u>	<u>EINECS Number</u>
Chondroitin Sulphate	100	9007-28-7	C ₁₄ H ₂₁ NO ₁₄ S	232-696-9

Section 4 Emergency and First Aid Measures

Eyes: If symptoms develop, immediately move individual away from exposure and into fresh air. Rinse with plenty of water for at least 15 minutes while holding eyelids apart.

Skin: Remove contaminated clothing. Wash with soap and copious amounts of water.

Swallowing: Wash out mouth and drink water if conscious. Never give anything by mouth to an unconscious person. Seek medical attention if feeling unwell.

Inhalation: Remove to fresh air. If breathing is difficult, administer oxygen and seek medical help.

Section 5 Fire-fighting measures

Fire and Explosion Hazards: May form flammable dust/air mixtures. May emit toxic fumes under fire conditions.

Extinguishing Media: Foam, water spray, carbon dioxide, dry chemical powder

Fire Fighting Instructions: Wear a self-contained breathing apparatus with a full-face piece operated in the positive pressure demand mode. Use personal protective equipment. Equipment should be thoroughly decontaminated after use.



Section 6 Accidental Release Measures

Environmental precautions:	None
Cleaning up Methods:	Sweep up, place in a bag and hold for waste disposal. Avoid raising dust. Ventilate area and wash spill site after material pickup is complete.

Section 7 Handling and Storage

Handling:	Avoid creating dust. Avoid contact with eyes, skin and clothing, avoid prolonged or repeated exposure.
Storage:	Keep containers tightly closed in a cool and dry place for quality reasons. Protect from humidity and light.

Section 8 Exposure Controls/Personal Protection

Engineering Measures:	Provide sufficient mechanical (general and/or local exhaust) ventilation to maintain exposure below level of overexposure
Respiratory Protection:	Avoid inhalation and wear respirator if needed. 3M Dust respirator No. 8710 or 9900 is recommended, or a NIOSH/MSHA jointly approved dust respirator
Hand/Body Protection:	Avoid contact and prolonged or repeated exposure. Wear resistant gloves. Wash thoroughly after handling. Protective clothing recommended.
Eye Protection:	Wear safety glasses in compliance with OSHA regulations if needed.

Section 9 Physical and Chemical Properties

Physical state:	Free flowing powder
Colour:	White or off-white
Odour:	Characteristic

Section 10 Stability and Reactivity

Chemical Stability:	Stable under conditions mentioned in section 7
Hazardous Polymerisation:	Product will not undergo hazardous polymerisation
Incompatibility:	Strong oxidising agents
Hazardous Decomposition Products:	May form Carbon Dioxide, Carbon Monoxide and Nitrogen Oxides



Section 11 Toxicological Information

Toxicity Data:	No data available
Skin Contact:	May cause skin irritation
Skin Absorption:	May be harmful if absorbed through skin
Eye Contact:	May cause eye irritation
Inhalation:	May be harmful if inhaled, material is irritation to mucous membranes and upper respiratory tract.
Ingestion:	May be harmful if swallowed. Possible allergic reaction.

Section 12 Ecological Information

Eco-toxicity:	No Data Available
Air pollution:	Observe local/national regulations

Section 13 Disposal Considerations

Waste from residues:	Disposal shall be in accordance with local & national regulations. Can be disposed of with domestic refuse in accordance with the necessary technical regulations following consultation with waste disposal experts and the responsible authorities. Avoid disposing into drainage systems.
----------------------	--

Section 14 Transport Information

Transport classification:	Not classified as dangerous for any mode of UK or International transport.
---------------------------	--

Section 15 Regulatory Information

European Regulation:	This product is not classified according to the EU regulations.
Reviews, Standards and Regulations:	Health & Safety at work act 1974 COSHH Regulations (1994) EH40 Occupational exposure limits
US Federal Regulations:	Not known



Section 16 Other Information

This advice is given by Cambridge Commodities Ltd who accepts no legal liability for it. The information contained herein is based on the present state of our knowledge and is intended to describe our products from the point of view of safety requirements. It should not therefore be construed as guaranteeing specific properties.

Individuals working with chemicals should consider all chemicals to be potentially hazardous even if their individual hazards may be uncharacterised or unknown.



This Information provided in this document is subject to change and the batch specific Certificate of Analysis should always be referenced.

To be used as per local legislation.

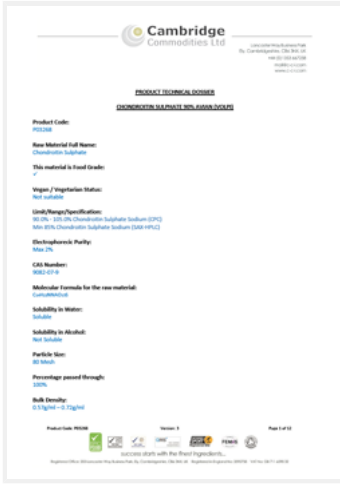
Change History

Version	Change	Customer Notification required Yes / No
1	First Issue	N/A
2	Amended the molecular formula and CAS number to comply with sigma Aldrich	Yes
3	Added Volpi test result specifications.	No

Document Approval

Originator Job Title	QC Technician	Approver Job Title	Quality Manager
 Ash Bean (Jul 14, 2016)		 Hannah Prichard (Jul 14, 2016)	











P03268-Chondroitin Sulphate 90% Avian (Volpi)-Technical Dossier V3

Adobe Sign Document History

07/14/2016

Created:	07/14/2016
By:	Ash Bean (ash.bean@c-c-l.com)
Status:	SIGNED
Transaction ID:	CBJCHBCAABAAtMnTTjKgTyZbwKHkAehUv3XIEJSIIFpH

“P03268-Chondroitin Sulphate 90% Avian (Volpi)-Technical Dossier V3” History

-  Document uploaded by Ash Bean (ash.bean@c-c-l.com) from Reader
07/14/2016 - 2:48:51 PDT - IP address: 81.145.42.226
-  Document signed in Reader by Ash Bean (ash.bean@c-c-l.com)
Signature Date: 07/14/2016 - 2:49:15 PDT - Time Source: server - IP address: 81.145.42.226
-  Document emailed to Hannah Pritchard (Hannah.Pritchard@c-c-l.com) for signature
07/14/2016 - 2:49:16 PDT
-  Document viewed by Hannah Pritchard (Hannah.Pritchard@c-c-l.com)
07/14/2016 - 2:59:51 PDT - IP address: 81.145.42.226
-  Document e-signed by Hannah Pritchard (Hannah.Pritchard@c-c-l.com)
Signature Date: 07/14/2016 - 3:00:22 PDT - Time Source: server - IP address: 81.145.42.226
-  Signed document emailed to Ash Bean (ash.bean@c-c-l.com) and Hannah Pritchard (Hannah.Pritchard@c-c-l.com)
07/14/2016 - 3:00:22 PDT